

Department of Engineering
Tim Bryan, P.E., PTOE, County Engineer

3137 South Liberty Street, Canton, MS 39046
Office (601) 855-5582 FAX (601) 859-5857

MEMORANDUM

May 1, 2024

To: Casey Brannon, Supervisor, District I
Trey Baxter, Supervisor, District II
Gerald Steen, Supervisor, District III
Karl Banks, Supervisor, District IV
Paul Griffin, Supervisor, District V

From: Tim Bryan, P.E., PTOE
County Engineer

Re: Camden Glen
Preliminary Plat

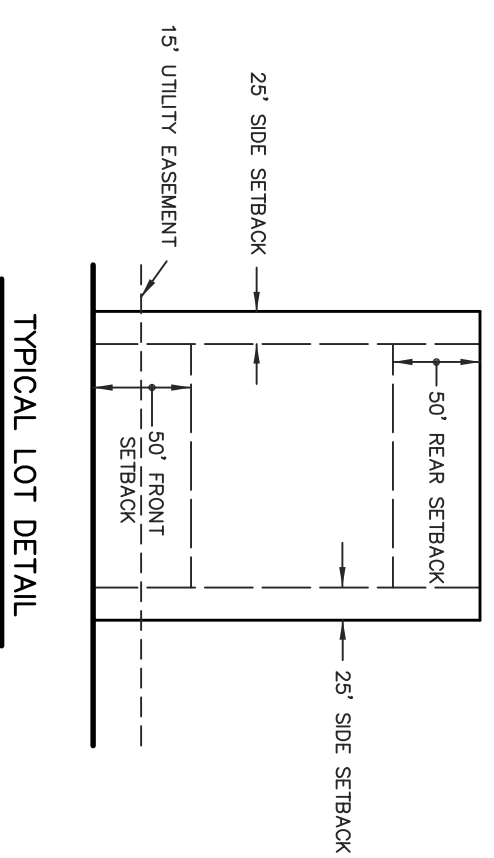
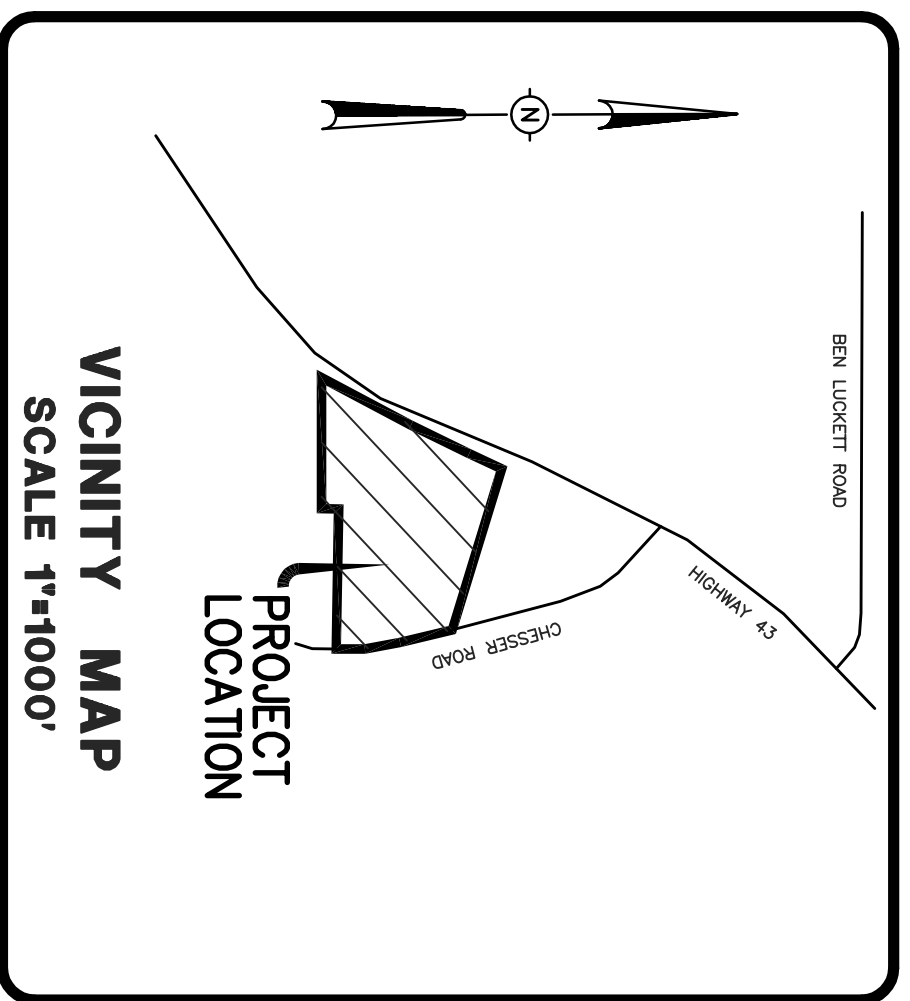
The Engineering Department recommends approval of the preliminary plat of Camden Glen. The development contains 8 lots on 20.25 acres. There is no public infrastructure associated with this development.

PRELIMINARY PLAT

FOR CAMDEN GLEN

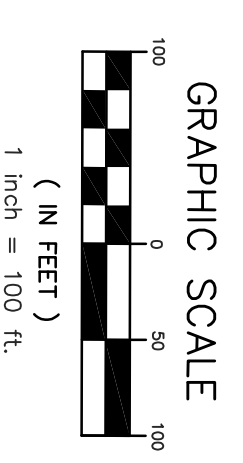
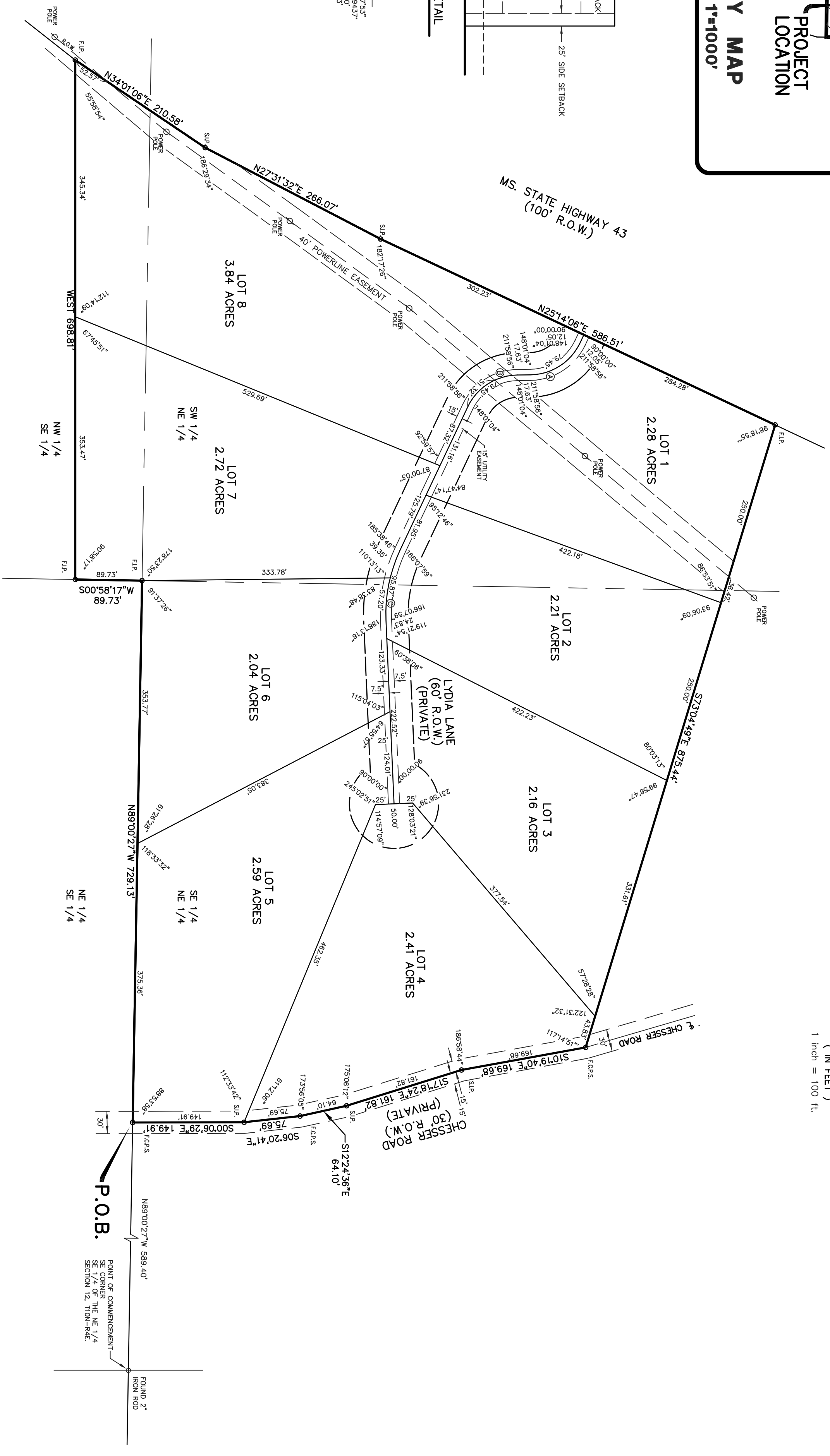
SITUATED IN THE
 SOUTH 1/2 OF THE NORTHEAST 1/4 AND THE NORTHWEST 1/4 OF
 THE SOUTHEAST 1/4 OF SECTION 12, TOWNSHIP 10 NORTH -
 MADISON COUNTY, MISSISSIPPI

PLATTED & SURVEYED BY
 H D LANG AND ASSOCIATES, INC.
 ENGINEERS / LAND SURVEYORS
 4099 NORTH STATE STREET
 JACKSON, MISSISSIPPI
 (601) 362-4886



CENTERLINE
 CURVE DATA

Ⓐ Δ = 6357.53*	Ⓑ Δ = 6357.53*
D = 76.39437'	D = 76.39437'
R = 75.00'	R = 75.00'
L = 63.73'	L = 63.73'
Ⓒ Δ = 2744.02*	
D = 2864.789'	
R = 200.00'	
L = 90.81'	



NOTES:

1. THIS SUBDIVISION LIES WITHIN THE LIMITS ESTABLISHED FOR ZONE X (NO SHADING) ACCORDING TO FIRM MAP NUMBER 2808900300 F, EFFECTIVE MARCH 17, 2010.
 2. DIMENSIONS ALONG CURVES ARE CHORD DISTANCES.
 3. SURVEY CLASSIFICATION "B".
 4. REFERENCE MERIDIAN: NORTH REFERENCED TO GPS (GRID).
 5. IRON PINS SET AT ALL LOT CORNERS.
 6. AREA = 20.25 ACRES, MORE OR LESS.
 7. DATE OF FIELD SURVEY: APRIL 12, 2023.
 8. DATE OF PREPARATION OF PLAT: APRIL 13, 2023.
- F.C.P.S. DENOTES FOUND COTTON PICKER SPINDLE
 F.I.P. DENOTES FOUND 1/2" IRON PIN
 S.I.P. DENOTES SET 1/2" IRON PIN